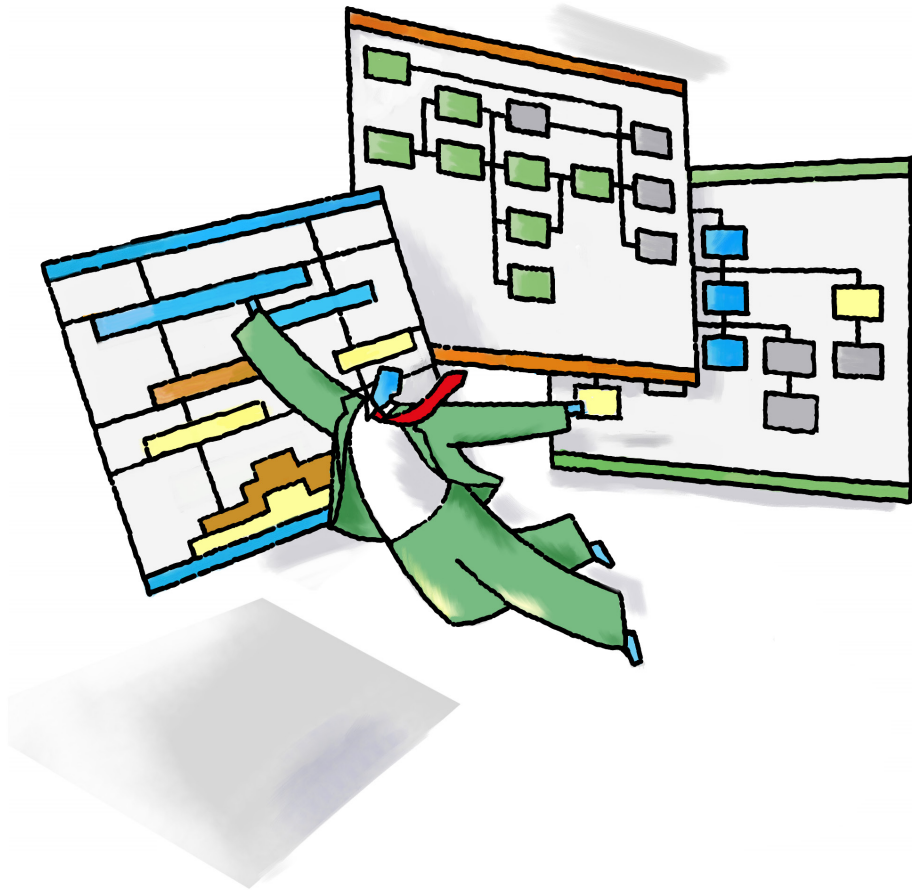


# GRANEDA Dynamic

## New in GRANEDA Dynamic 4.2

Support of  
Microsoft Project 2010  
and Windows 7

- ▶ Vertical Annotations for Bars
- ▶ Free Positioning of Legend
- ▶ New Bar Shapes
- ▶ Time Slot of Bar Movement Can be Limited
- ▶ New Peripheral Title Field
- ▶ Printing of Time Sections
- ▶ New Option for Unambiguous Line Routing
- ▶ Enhancements of Interfaces



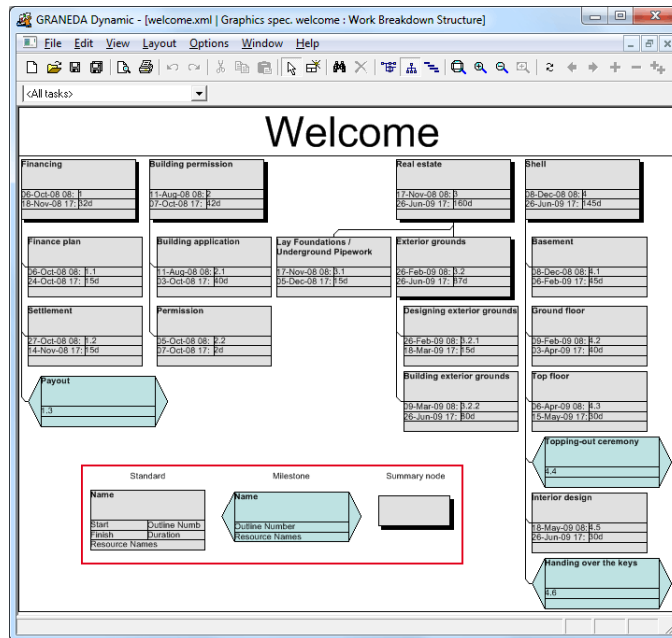
# New Functions

## Vertical Annotations for Bars



Annotations positioned above or below a bar can now be aligned vertically. In addition, texts can be edited directly in place at the bar.

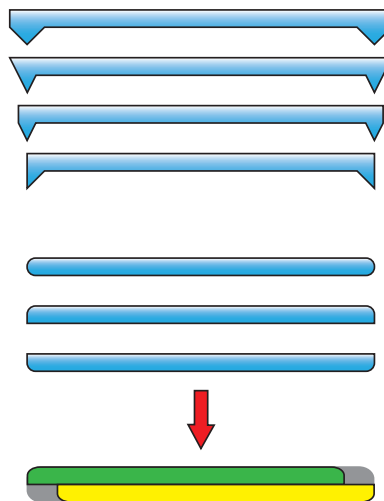
## Free Positioning of Legend



The legend can now also be placed inside the diagram.

To view the legend on the screen, a separate window can be added.

## New Bar Shapes

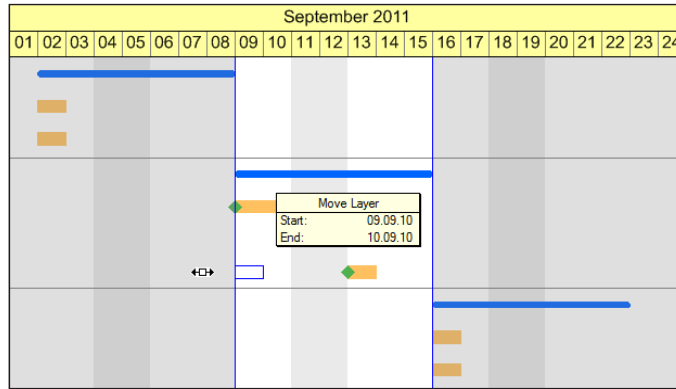


Four new bar shapes have been implemented. They make it easier to display summary bars, since they do not have to be assembled from single parts.

In addition, bar shapes that have rounded corners are available now. They can be combined to more complex shapes.

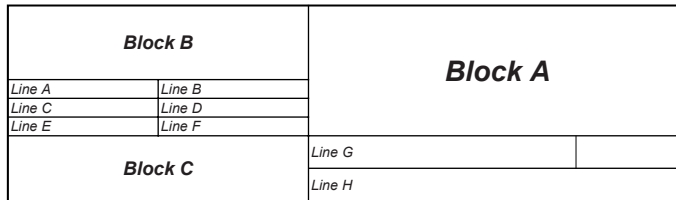
# GRANEDA Dynamic 4.2

## Time Slot of Bar Movement Can be Limited



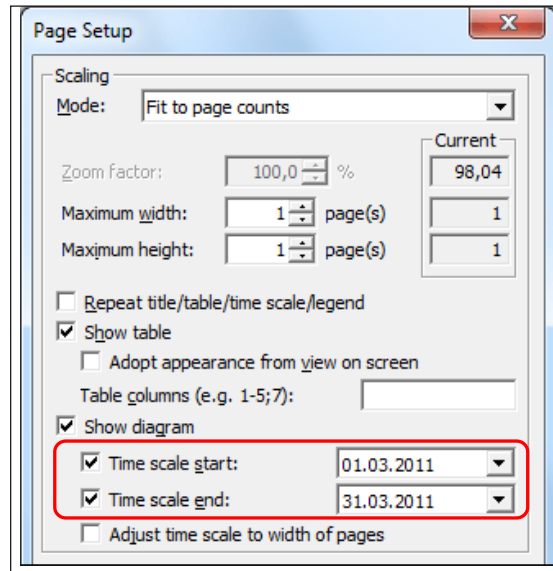
Bars can now be defined to move horizontally merely within a limited time slot. The limits can be defined by values in allocated data fields and are indicated by grey areas during the movement of a bar.

## New Peripheral Title Field



In the periphery of the diagram an additional annotation field is available to hold a title. The title field can be modified freely in terms of content and sectioning by the enhanced editor.

## Printing of Time Sections

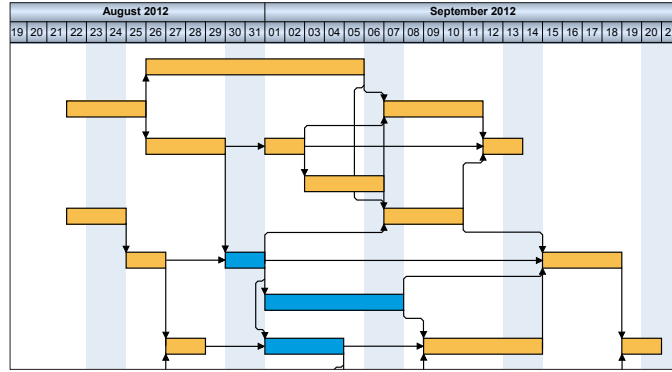


A limited time section of a Gantt chart can be selected to be printed.

- ▶ In the grouping dialog of Gantt charts you can specify for each level whether a page break is to be performed after each group or merely in cases where a group does not fit on a page any more.
- ▶ Also, zooming and scrolling options have been added to the page preview.

---

## New Option for Unambiguous Line Routing



The line layout in a Gantt chart offers a new option Distinguishable. It ensures that you can always clearly recognize where a link comes from and where it leads to.

- ▶ The line routing was optimized in a way so that even in nested branches the number of cross-overs remains minimal.
- ▶ The height of lines is automatically adjusted to give way to horizontal link sections.
- ▶ Small slants in link bends indicate that a link has changed its direction.

---

## Enhancements of Interfaces

- ▶ Support of **Microsoft Project 2010**.
- ▶ Faster transfer of projects from Microsoft Project, if no re-export is required.
- ▶ Wizard to process user specific **CSV files**.
- ▶ Macro to transfer project data directly from **Microsoft Excel**.
- ▶ Project selections and multi-project processing when importing **XER** files from **Primavera**.



NETRONIC Software GmbH  
Pascalstrasse 15  
52076 Aachen  
Germany  
Phone +49 2408 141-0  
Fax +49 2408 141-33  
Email sales@netronic.com  
www.netronic.com