

[The First 100 Days of GRANEDA Dynamic 4.2](#)

The new GRANEDA Dynamic version 4.2 has been available since the end of May. This release focuses on supporting Windows 7 and Microsoft Project 2010; in addition, the interfaces for applications such as Oracle Primavera and Microsoft Excel were enhanced. The outcome of this are satisfied customers who can now use GRANEDA 4.2 with Microsoft Project 2010 on Windows 7 easily - documented by the statement of *Michael R. Lavich, C.E.T., Manitoba Hydro, Conawapa Project Liaison Officer, re-Construction Project Controls, Power Projects Development Division*: "I just wanted to drop you a quick note to let you know that the GRANEDA software is performing exactly as I hoped it would and I have been able to make immediate use of it as an effective tool. Thank you for your help in getting me set up."

[Service Release of GRANEDA Dynamic 4.2 \(Build No. 4.200.1195.0 of July 27, 2011\)](#)

New Functions:

1. Nodes connected by the link type „start-start“ are now displayed below each other if they were positioned in the same time ribbon.
2. The loading performance of projects containing increased cross-linking has been enhanced markedly. The list of bugfixes and enhancements you can download from www.netronic.com

[Tips And Tricks For GRANEDA Dynamic Users Now on YouTube](#)

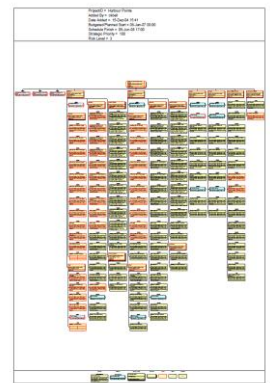
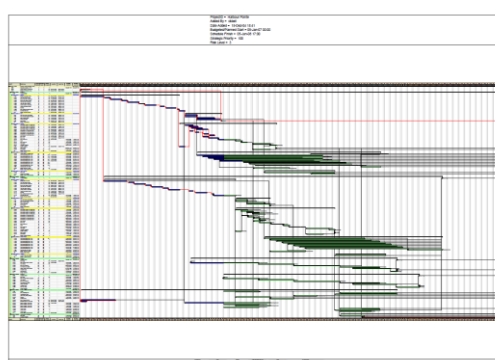
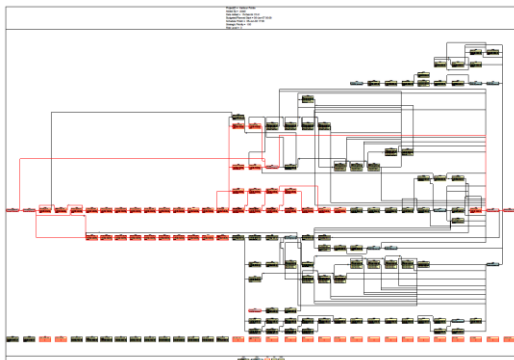
To help you getting acquainted to the plethora of functions offered by GRANEDA Dynamic 4.2 you can find short videos and illustrated instructions of our product at www.netronic.com and at [YouTube](https://www.youtube.com) / GRANEDA.

[GRANEDA Dynamic 4.2 Complements Oracle Primavera 6/7/8 consequently](#)

The advantages of the GRANEDA Dynamic network diagrams:

The GRANEDA Dynamic network diagrams stand out due to the optimised node arrangement showing a minimized number of crossing links. Activities can be grouped by any data field and display a time-orientated arrangement using any interval. Even large projects are clearly readable. The node appearance and the node contents can be specified individually. Using filters, you can graphically display the appropriate information for each occasion, as shown at YouTube / GRANEDA.

- Time-orientated arrangement of activities
- Create subnets via variable filters or subnets consisting only of the nodes marked.
- Integrated world view (navigation window with complete view of the diagram) to make the navigation in large net charts easier.
- Display of the critical path
- Placement of text and graphics boxes anywhere in the diagram area to show additional information, e.g. your company logo.
- Grouping of nodes by any criteria
- Legend for a clear identification of nodes
- Data-driven visualization of your data by using maps



Kaleidoscope of New Customers and Projects Using GRANEDA Dynamic Applications



voestalpine Austria Draht GmbH Rolling Mill Donawitz

The factory premises of voestalpine Stahl Donawitz GmbH measure 21 hectares and are located in the periphery of Leoben, Austria.

The company uses GRANEDA Dynamic as a graphical add-on to Primavera 6.

www.voestalpine.com

HELL Gravure Systems GmbH & Co. KG, Germany

... operates in the large areas of packaging/publishing rotogravure and of flexoprinting.

GRANEDA Dynamic is used to automatically generate work breakdown structures of the products from Excel tables.

www.hell-gravure.de



Assmann Beraten+Planen, Germany

... is one of the leading planning and consulting firms in the German construction industry. During more than 50 years of operating experience the enterprise has systematically developed to become an all-rounder.

GRANEDA Dynamic supports their time scheduling by individual bar charts.

www.assmann-do.de



Philips NXP Semiconductors Austria GmbH

...has more than 50 years of experience in producing voice recorders. Nearly a third of all voice recorders in the world is produced at Philips in Vienna

GRANEDA Dynamic supports production planning by its tree charts.

www.philips.at



Parsons Brinckerhoff

... is a global consulting firm assisting public and private clients to plan, develop, design, construct, operate and maintain critical infrastructure.

GRANEDA Dynamic is used to generate project charts from Primavera .XER data.

www.pbworld.com



NETRONIC Software GmbH
Pascalstrasse 15
52076 Aachen
Germany

phone +49 (0) 24 08 141-0
fax +49 (0) 24 08 141-33
sales@netronic.de
www.netronic.com