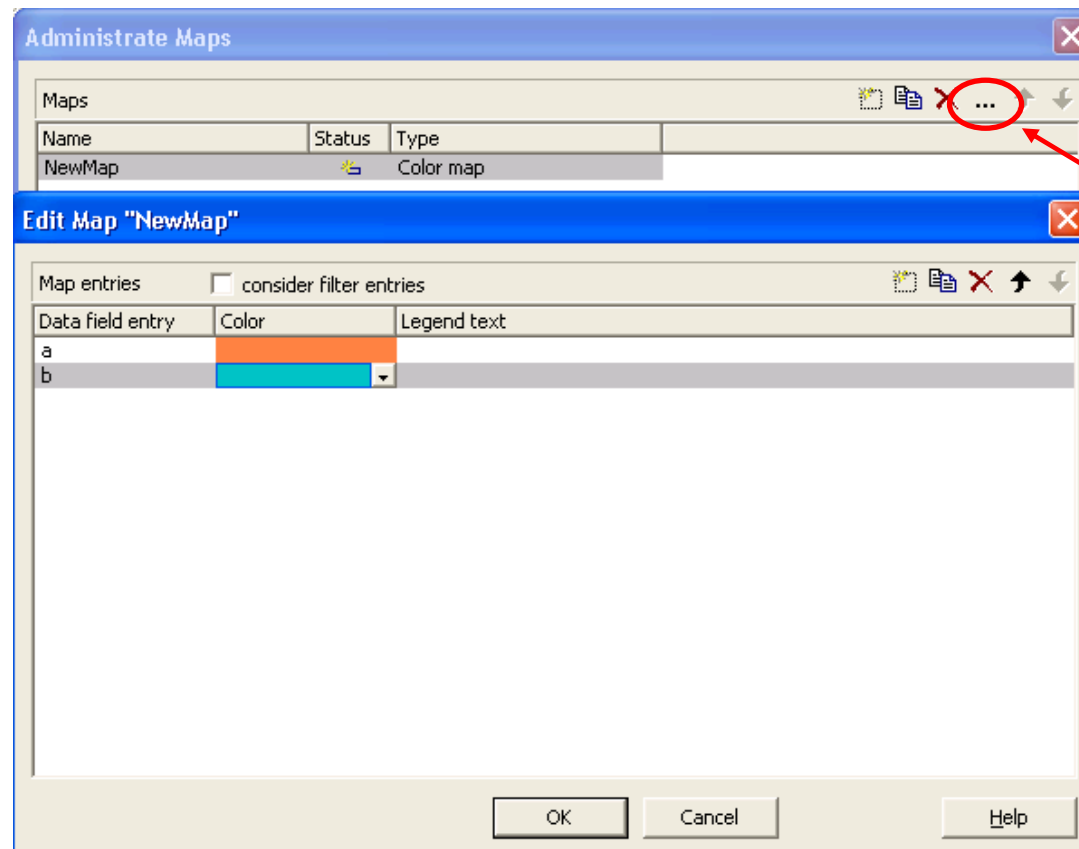
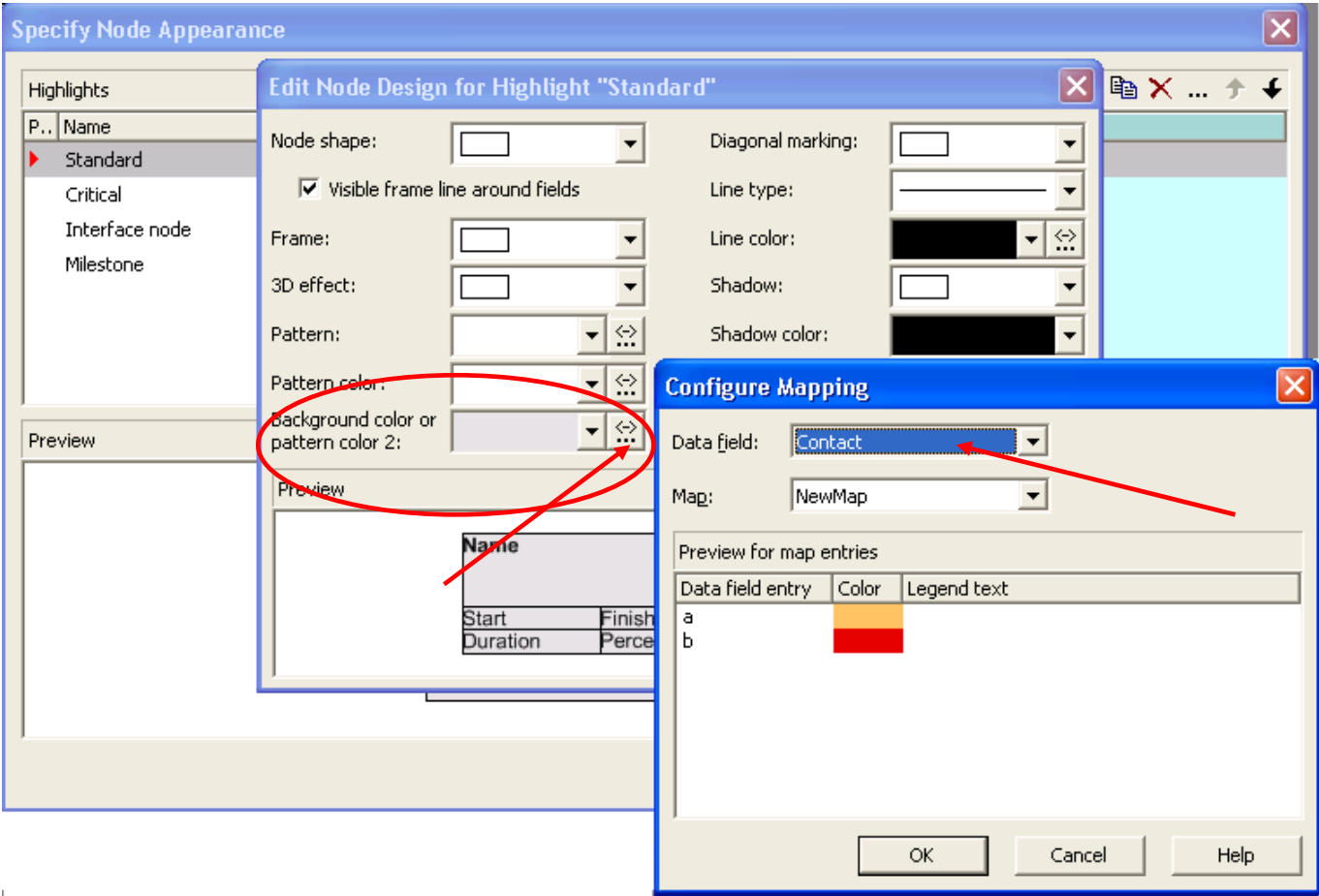


How to Use Maps to Set the Node Color Data-Dependent

Create a new map in the dialog **Administrare Maps** (for the data field entries **a** and **b**, for example)



Afterwards, select the desired node format in the dialog **Specify Node Appearance**. Click on **...** to open the dialog **Edit Node Design for Highlight** where you can assign the new map to the background color.



Now you can set the node colors of the assigned data field by the values "a" and "b".

