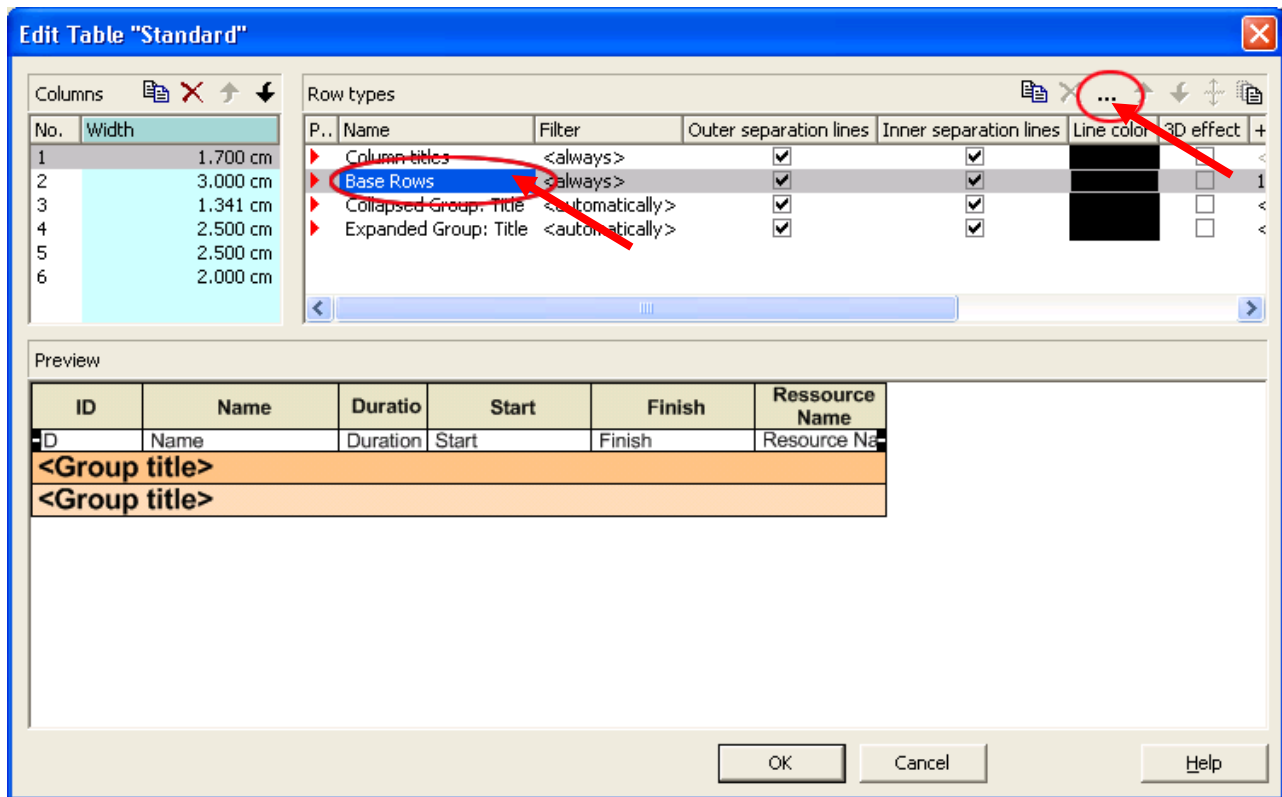


How to Wrap Text in the Table Area of the Gantt Diagram

To allow wrapping of text in the table area open the **Edit Table** dialog. (You reach this dialog by clicking **Options > Specify Table**. In the Specify Table dialog select the desired table and then click **...**). Now select the row type **Base Rows** and click **...**.



The **Edit Row type** dialog opens up. Now select the desired field, set **Minimum/Maximum line count** to 2 or more and tick the **Wrapping** check box. The line will be either wrapped automatically if the text is too long for one line or you can insert a manual word-wrap by pressing SHIFT + ENTER.

