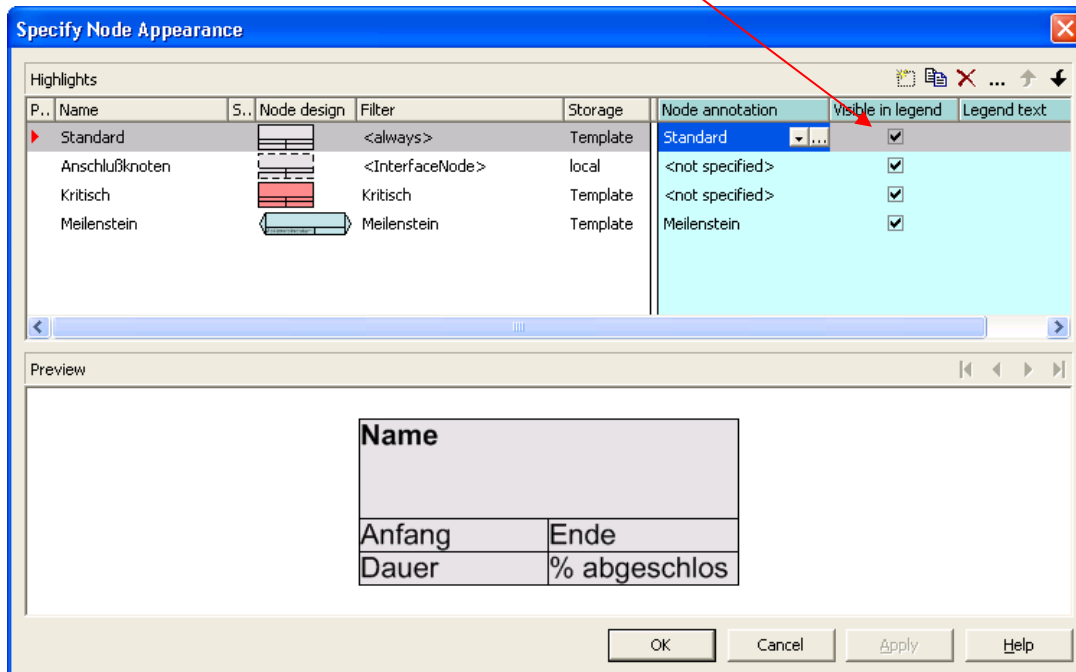
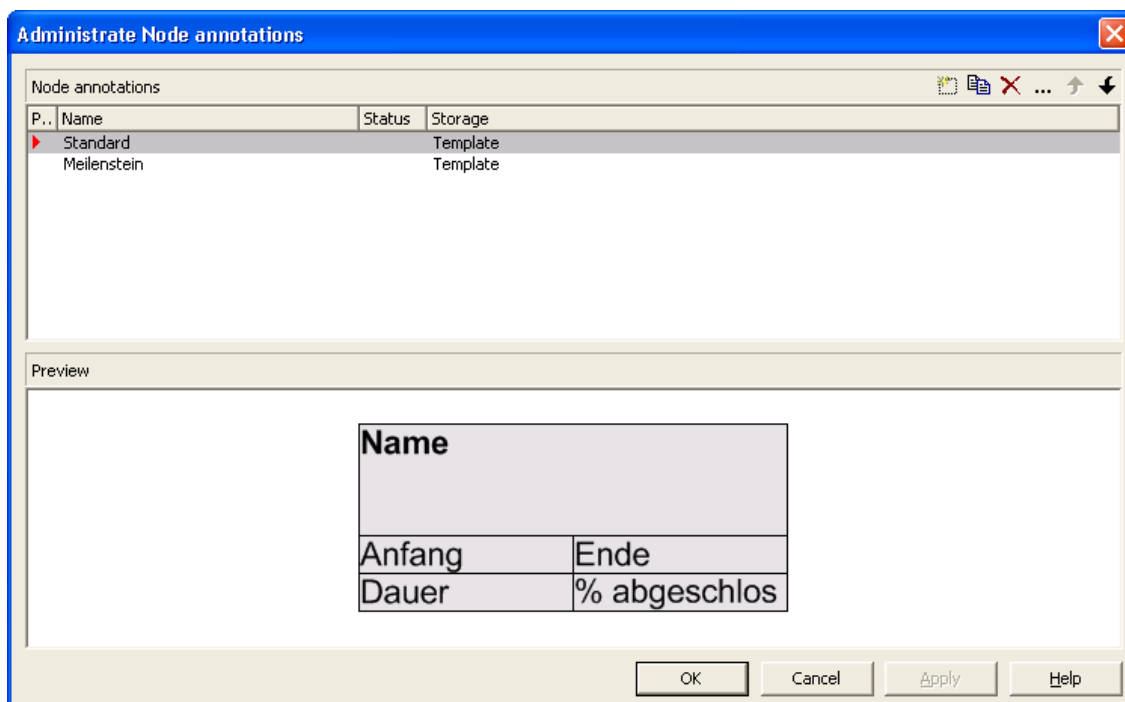


## How to Add Fields to a Node and Assign Them to Other Data Fields in the PSP Nodes of GRANEDA Dynamic

1. Open the dialog **(Options) Specify Node appearance**
2. Mark one of the nodes in the list and click on ... in the column **Node annotation**



3. The dialog **Administrate Node annotations** appears



4. Select a node annotation and click on **...** to open the dialog **Edit node annotation XXX**
5. Here you can add further fields to the node and, if necessary, assign them to other data fields

