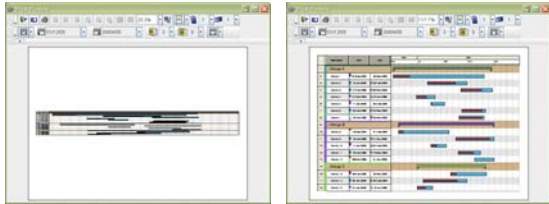


New in VARCHART JGantt 2.2

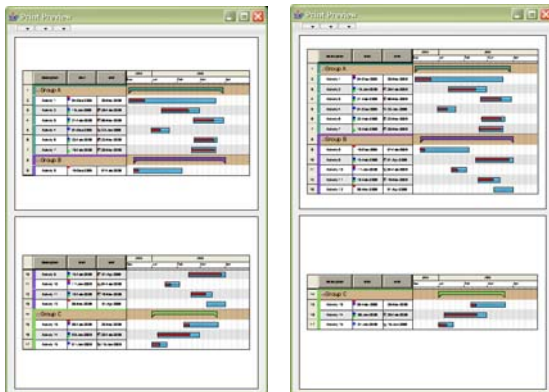
Optimum Page Utilization when Printing



The new version of VARCHART JGantt allows to adapt the aspect ratio of the diagram to be printed to the aspect ratio of the output medium by stretching or reducing the time scale of the diagram.

*Left: no adaptation to page size;
right: adaptation to page size*

Page Breaks on Borders of Rows and Groups



If the output of a diagram extends over more than a page in vertical direction, page breaks become necessary. In version 2.2 you can put them either on the borders of rows or on the borders of groups of activities. For multi-level grouping, the level on which the page breaks should occur can be defined.

Left: two-page preview showing page breaks on row borders; right: page breaks on group borders.

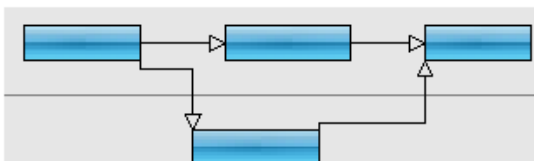
Automatic Line Breaks

Group A	
NETRONIC user conference	0
Activity 2	1

Center row: automatic page break

Apart from the option to define line breaks manually by inserting '\n' in a character string, in version 2.2 line breaks can be generated automatically for table fields and annotation, if the length of the field is not sufficient to display the whole text.

Routing of Links in Optimized Rows



Links in optimized rows

The new version allows to display links to or from activities that were routed by the options GROUP_ROW LAYOUT_SINGLE or GROUP_ROW LAYOUT_SINGLE_OPTIMIZED.

Arrow Tips at the Ends of Links



Various arrow tips in different sizes

In the new version, the ports of links that join nodes can be displayed as shapes of various arrow tips in different sizes.

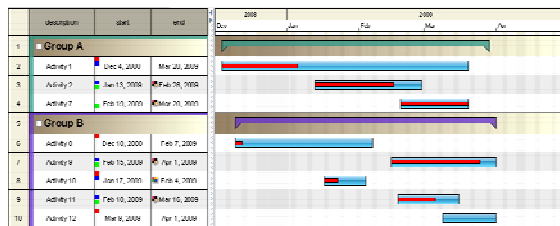
Graphical Enhancements

Contest 34			
Davidson			12.02.2007
Cabin	10.02.2007	27.02.2007	12.02.2007
Engine	02.03.2007	18.03.2007	02.03.2007
Stewart			19.02.2007
Cabin	12.03.2007	16.03.2007	12.03.2007
Engine	18.02.2007	01.03.2007	19.02.2007
Antifouling	15.03.2007	23.03.2007	19.03.2007

Symbols and more than one color in a table cell

In the new version NelLabel elements can be used in table cells. This way symbols can be placed next to character strings, special color patterns can be created within cells and more.

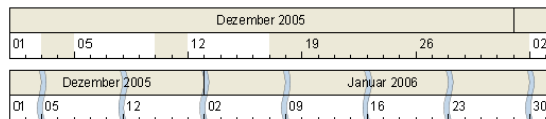
Enhancements on the objects NelLabel and NelPicture enlarge the existing range of application options of these objects and enhance their variability of display.



Alternating diagram rows, with separate group color showing a horizontal color gradient.

The background of a row in the table and in the Gantt graph can be displayed in colors, to visualize additional information on the node. Rows across the diagram (i.e. in the table and in the Gantt graph) may show alternating or serial colors. Groups can have separate colors. To many objects, in the place of plain colors, color gradients can be assigned, for example to nodes, rows, table headings, the time scale etc.

Collapsing Non-Working Periods



Time scale expanded and collapsed

Non-working periods can be collapsed in the time scale and in the Gantt graph. This way, they can visually disappear, which makes the chart even more concise and well structured. The pattern by which collapsed periods should be indicated can be defined.

Miscellaneous

- In the new version, the auto-scroll area can be defined by the property autoScrollMargin of the object JGIGantt-Graph.
- More than one node can now be selected for simultaneous interactions.
- By the new value NE_COMPLETE_LOGGING of the property loggingMode of the object NelXml, attributes that lack values will also be stored to the XML string.
- Moving and modifying the size of table columns can be switched on and off by the user.

NETRONIC Software GmbH
 Pascalstrasse 15
 52076 Aachen
 Germany
 Phone +49 2408 141-0
 Fax +49 2408 141-33
 Email sales@netronic.com
 www.netronic.com