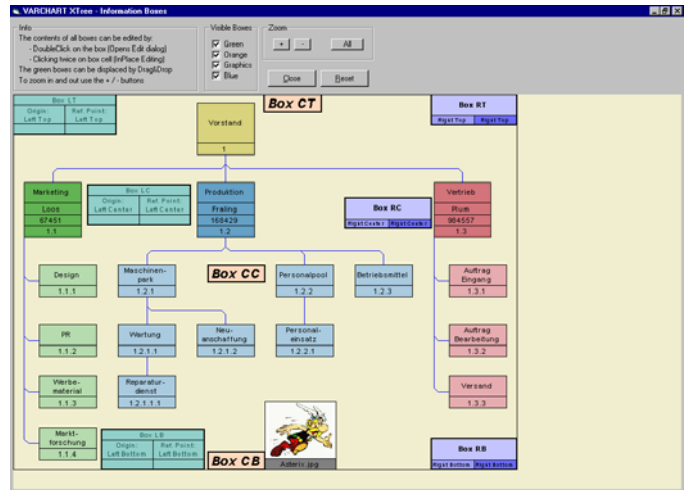
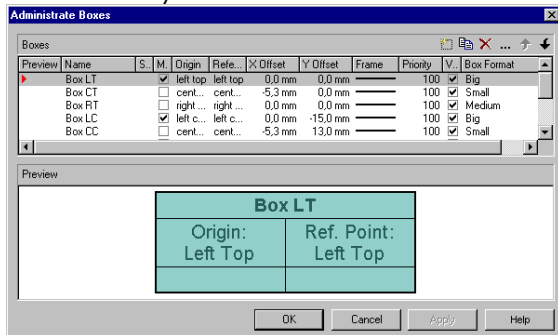


New in VARCHART XTree Version 2.9

Text and Graphics Boxes

Place text or graphics boxes in the diagram in order to display additional information.

The boxes can be moved interactively and edited at run time. Via the new objects VcBox, VcBox-Collection etc. you can access the boxes at run time.

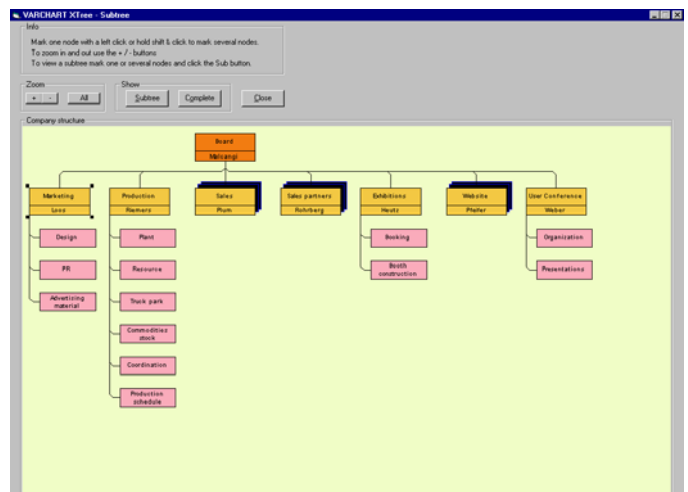


Creating Sub-Trees

Create sub-trees from all nodes marked at run time or interactively via filters.

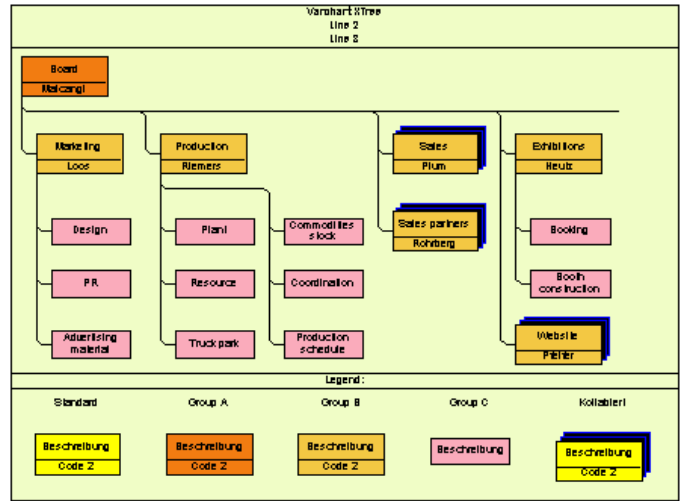
Switch comfortably between the view of the complete tree and of the sub-tree.

Also in sub-trees you can zoom smoothly.



Title and Legend

Six title lines and a legend can be displayed in the diagram.



Further Enhancements

- Dynamic field heights of the node annotations replace static specifications of the number of lines. You now can specify the minimum and maximum number of lines.
- For node formats you can specify via maps the font and the font color dependent on the data.
- Zooming via the mouse wheel is possible now. You may decide whether the final user is allowed to use this possibility or not.
- The context menu at run time contains two new options: "Create sub-tree" and "Restore complete tree".

Several new objects, properties, methods and events have been added:

Objects:

VcBox
VcBoxCollection

Properties:

VcBox.FieldText
VcBox.Name
VcBox.Visible
VcBoxCollection.Count
VcFilterCollection.MarkedNodesFilter

Methods:

VcBox.GetXYOffset
VcBox.GetXYOffsetAsVariant
VcBox.SetXYOffset
VcBoxCollection.BoxByName
VcBoxCollection.FirstBox
VcBoxCollection.NextBox

NETRONIC Software GmbH
Pascalstrasse 15
52076 Aachen
Germany
Phone +49 24 08 141-0
Fax +49 24 08 141-33
Email sales@netronic.com
www.netronic.com