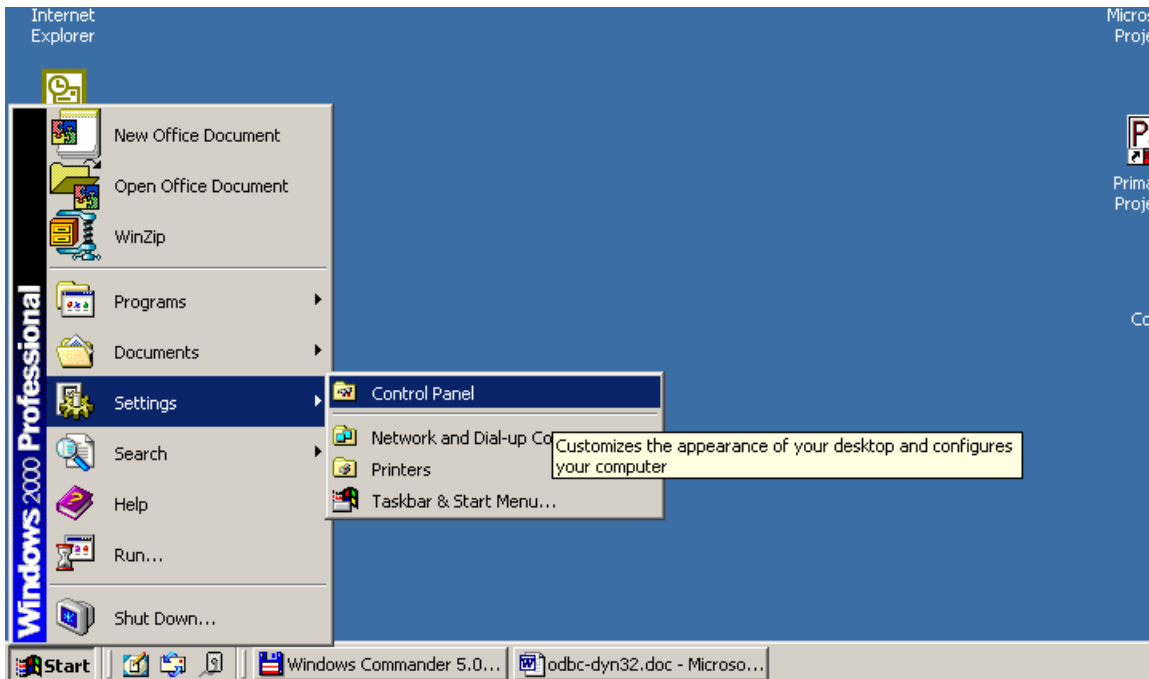
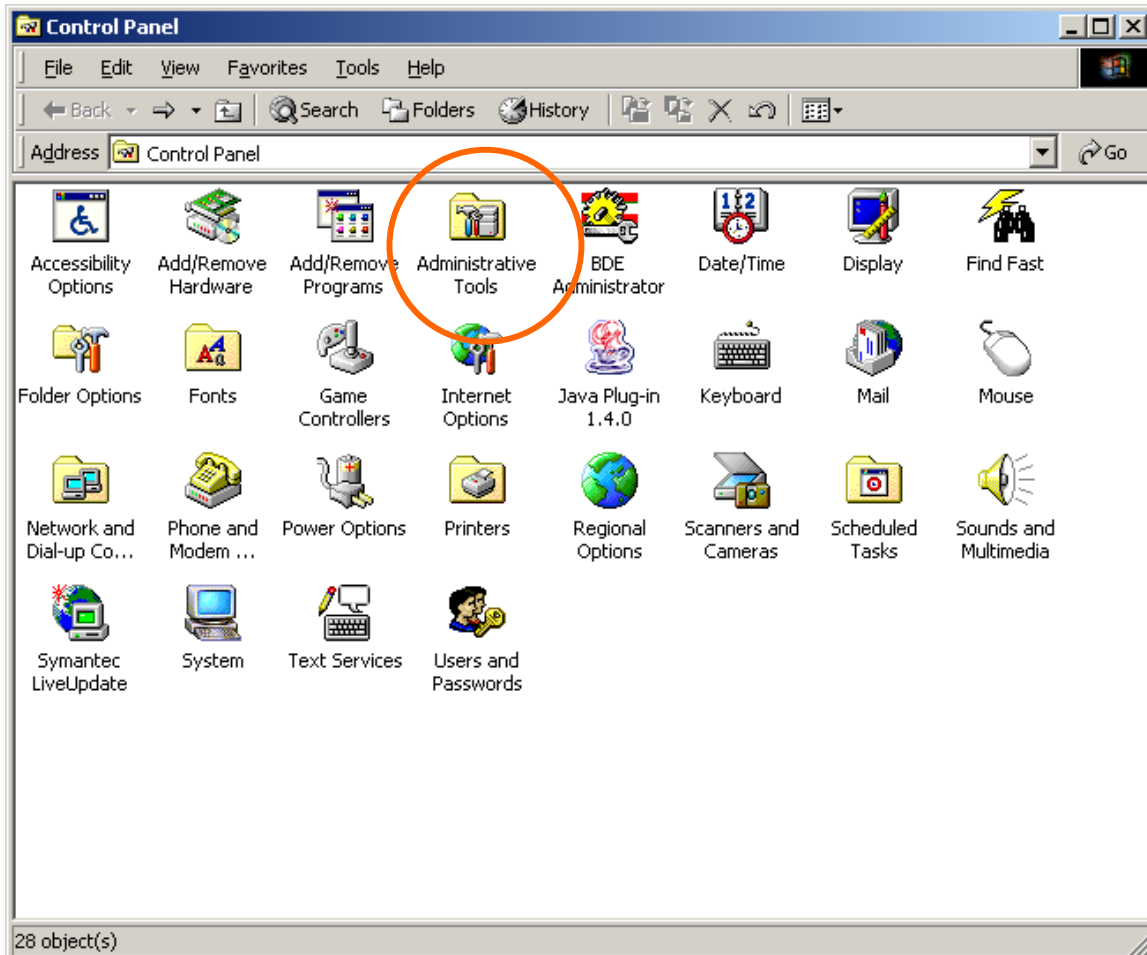


Creating an ODBC Data Source for a connection between Microsoft Project 2000/2002/2003 and GRANEDA Dynamic

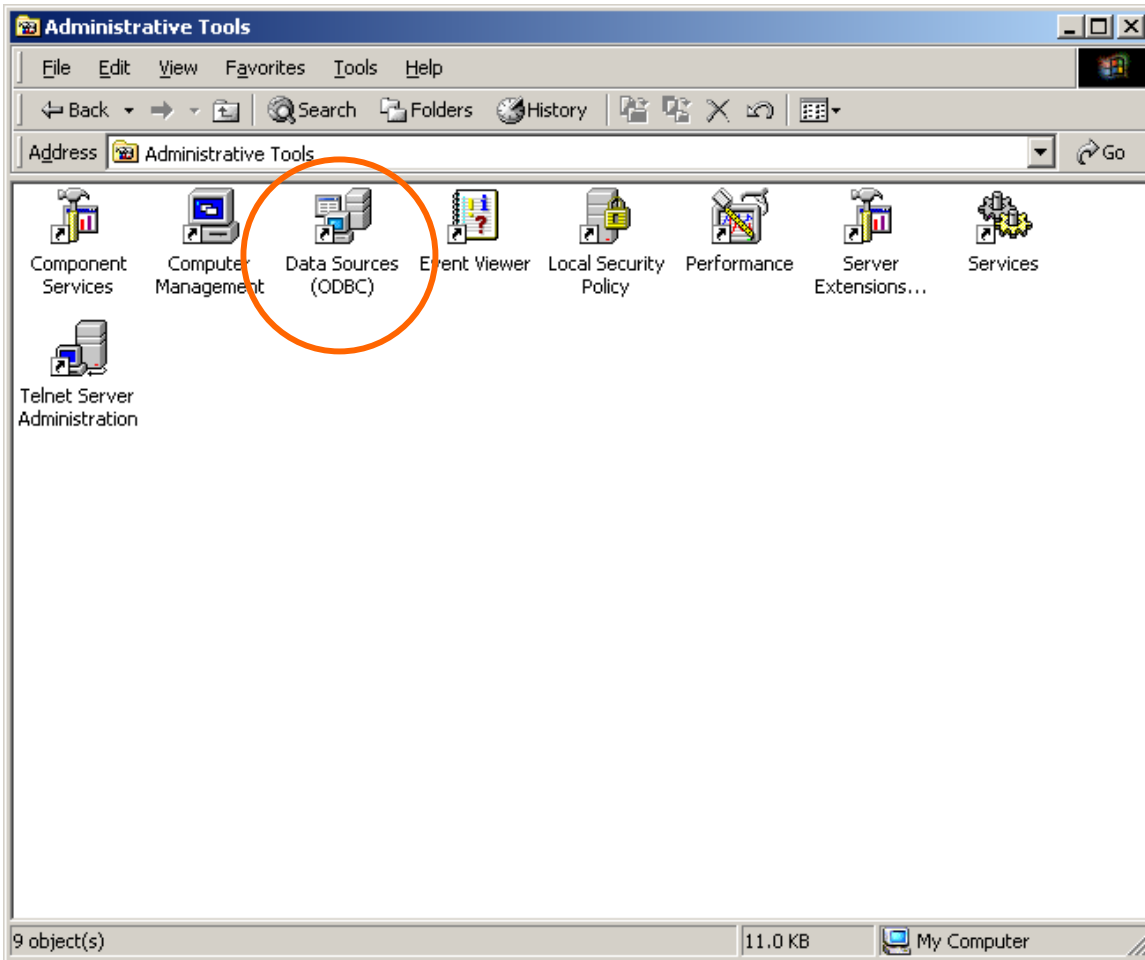
In the Windows **Start** menu click on **Settings – Control Panel**.



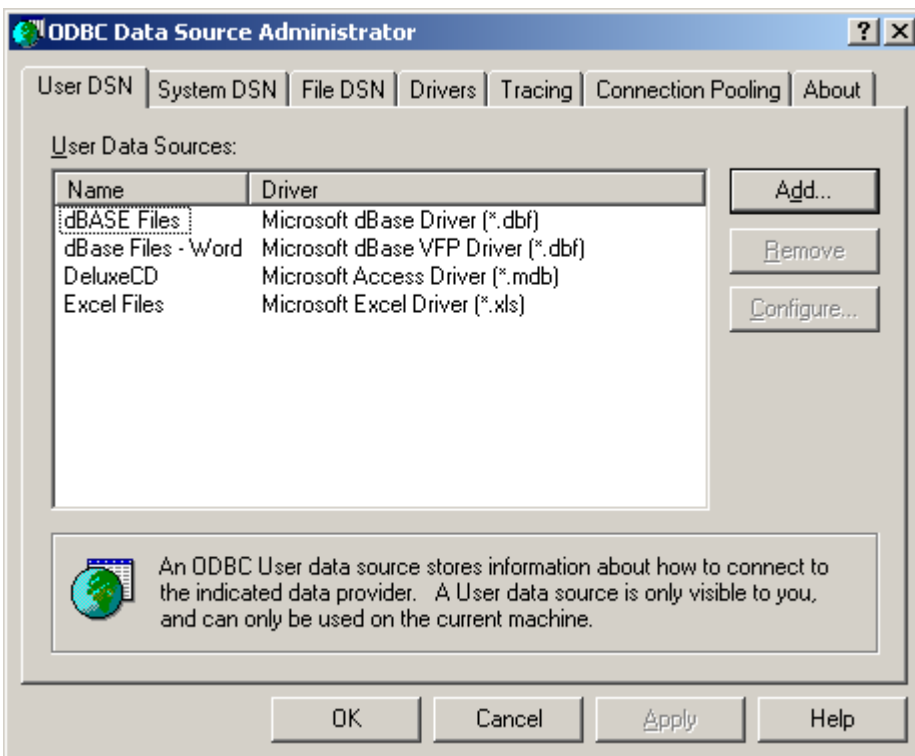
In the **Control Panel** window double-click on **Administrative Tools**.



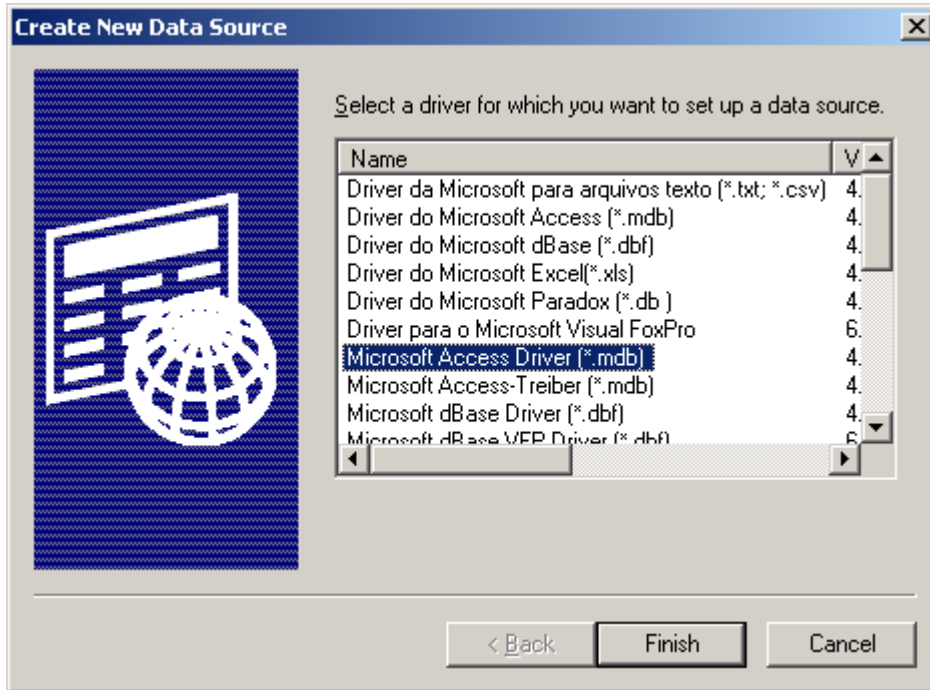
In the **Administrative Tools** window double-click on **Data Sources (ODBC)**



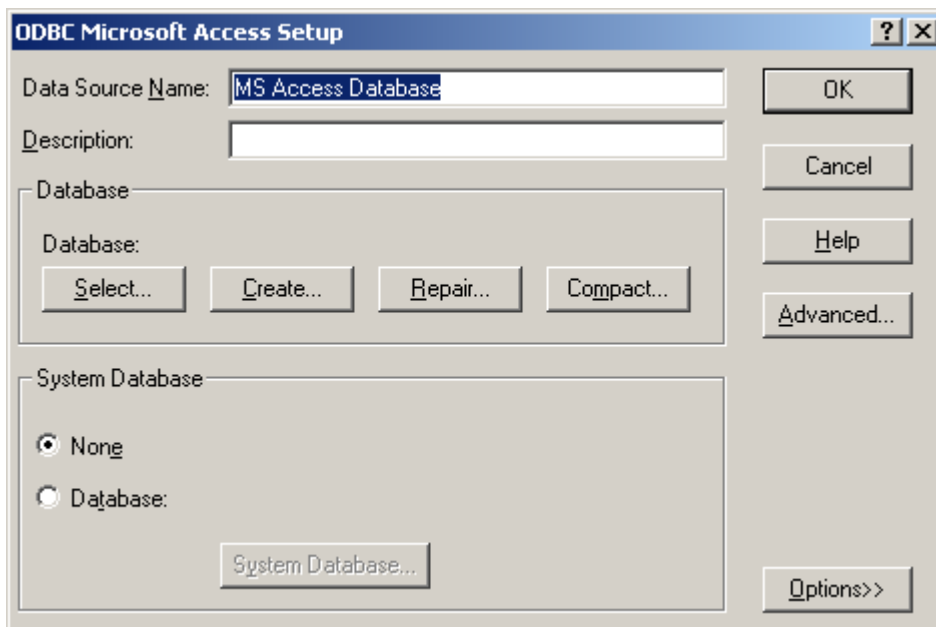
The **ODBC Data Source Administrator** will appear. On the **User DSN** tab click the **Add** button.



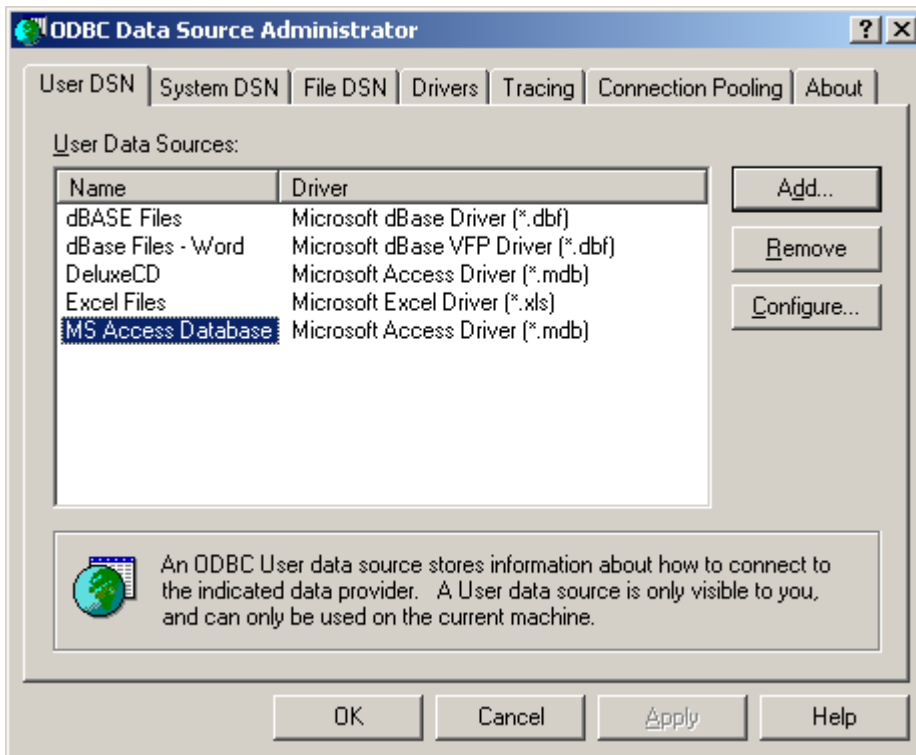
The **Create New Data Source** dialog box will appear. Select the entry **Microsoft Access Driver (*.mdb)** and then on the button **Finish**.



In the **ODBC Microsoft Access Setup** dialog box enter **"MS Access Database"** in the line **Data Source Name** and click on **OK**.



Then in the **ODBC Data Source Administrator** the new entry “**MS Access Database**” will appear in the list.



Now close all dialog boxes. The **Data Source Name** is now available and can be used for the connection between Microsoft Project 2000/2002/2003 and GRANEDA Dynamic.

If you have any questions, please send an email to support@netronic.com.